

Pro-face
for the best interface

Touch Operator Interface

GP4000 SERIES

visibility



Enhanced Visibility

All models employ 65,535-color TFT LCDs with enhanced backlight brightness control. Crisp screens improve monitoring quality and safer operation.



Multiple Standards support a variety of Applications

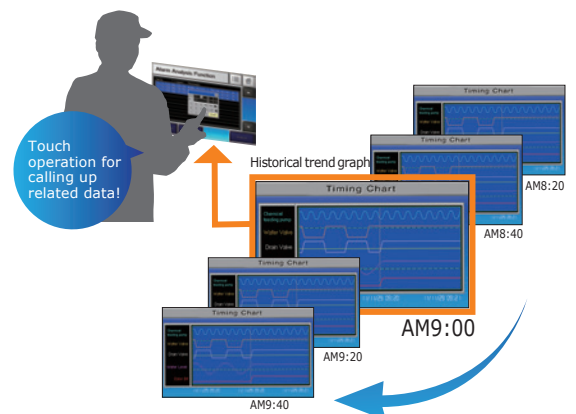
Coated components and compliance with a variety of international standards enable use in a diverse range of environments.



CCS Ship Classification is also supported.

Easy Troubleshooting

Alarm Analysis Function gives you timely understanding of error causes on site. With only a few clicks for configuration, you can set alarm analysis screens with logged status data of the alarm-related device.





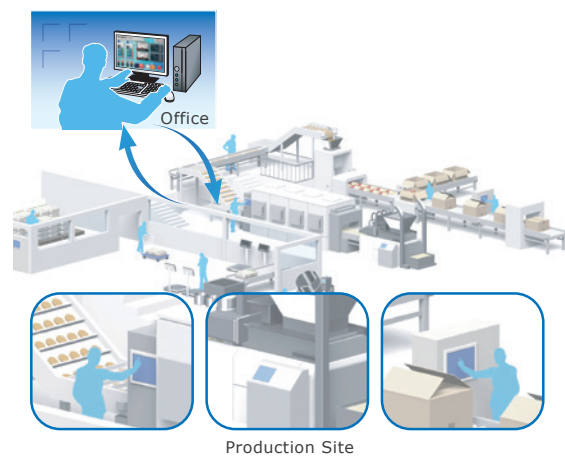
Mobile Remote Monitoring

Remotely monitor large-sized or long-distance applications, large process systems, or multiple machines on a manufacturing site on an easy-to carry iPhone, iPad, iPod touch, Android smartphone or Android tablet.



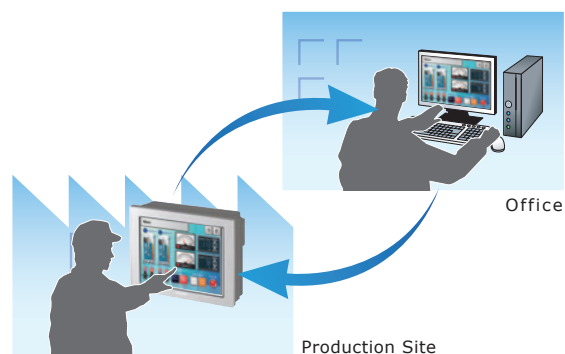
Remote Data Collection and Management

A data management system, built with Pro-Server EX software for production quality and efficiency through HMI units installed on production machines can be simply and cost-efficiently built with standard PC software, such as Microsoft Office and SQL.



Remote Monitoring

The Remote Monitoring software, GP-Viewer EX, allows you to monitor HMI screens installed on the production site from a Windows PC in a remote location.







For further information, visit our website.

<http://www.pro-face.com/product/hmi/gp4000.html>

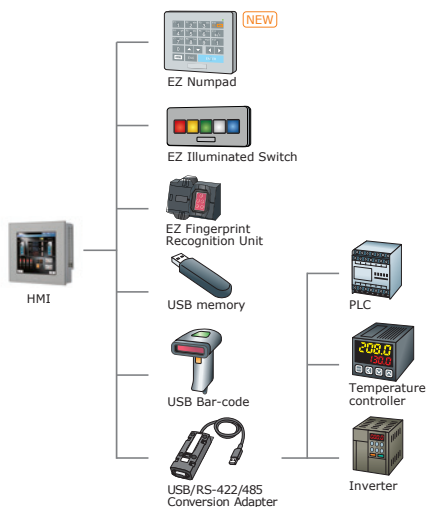


Lineup

Standard Model	12.1" AC 100-240V DC 24V	10.4" AC 100-240V DC 24V
	GP-4601T / GP-4603T (Isolated SIO model)	GP-4501T / GP-4503T (Isolated SIO model)
		
		
Display (Resolution)	65,536-color TFT (SVGA 800 x 600 pixels)	
Touch Panel Type	Analog or Matrix (Support Two-Point Touch)	
Memory	32MB (Application), SRAM320KB (Backup for HMI), SRAM64KB (Backup for Control)	
Ethernet	x1 (IEEE802.3i / IEEE802.3u, 10BASE-T/100BASE-TX)	
SIO	RS-232C×1, RS-422/485×1	
SD Card Slot (Max. 32GB)	x 1	
USB	USB Type-A (2.0) x 1, USB mini-B (2.0) x 1	
Replaceable Battery	Yes	
Alarm Analysis DB Function	Yes	
Other models	Coated model: Yes / Color variation: Yes / Rear-mount model: Yes (Except GP-4603T, GP-4503T)	

Easily connect multiple USB devices

A controller with serial interface, EZ Series accessory unit, bar code reader, and USB flash drive can be easily connected to the HMI unit.*



* EZ Fingerprint Recognition Unit also requires power supply cable.
* Multiple devices of the same model cannot be connected.

W Model	10.4" DC 24V
	GP-4501TW
	
	
Display (Resolution)	65,536-color TFT (VGA 640 x 480 pixels)
Touch Panel Type	Analog
Memory	16MB (Application), SRAM128KB (Backup for HMI)
Ethernet	x1 (IEEE802.3i / IEEE802.3u, 10BASE-T/100BASE-TX)
SIO	RS-232C×1, RS-422/485×1
SD Card Slot (Max. 32GB)	x 1
USB	USB Type-A (2.0) x 1, USB mini-B (2.0) x 1
Replaceable Battery	Yes
Alarm Analysis DB Function	No
Other models	Coated model: Yes / Color variation: Yes

7.5" DC 24V

GP-4401T




Color variation




5.7" DC 24V

GP-4301T / GP-4303T
(Isolated SIO model)



Color variation



3.5" DC 24V

GP-4201T / GP-4203T
(Isolated COM SIO model)



Color variation



65,536-color TFT (VGA 640 x 480 pixels)

65,536-color TFT (QVGA 320 x 240 pixels)

Analog

16MB (Application), SRAM320KB (Backup for HMI), SRAM64KB (Backup for Control)

x1 (IEEE802.3i / IEEE802.3u, 10BASE-T/100BASE-TX)

RS-232C×1, RS-422/485×1

RS-232C/422/485×1

x 1

No

USB Type-A (2.0) x 1, USB mini-B (2.0) x 1

Yes

No (Rechargeable battery)

Yes

Coated model: Yes / Color variation: Yes / Rear-mount model: Yes (Except GP-4303T, GP-4201T and GP-4203T)

7.0" wide DC 24V

GP-4401WW



Color variation



5.7" DC 24V

GP-4301TW




Color variation



3.5" DC 24V

GP-4201TW



Color variation



65,536-color TFT (WVGA 800 x 480 pixels)

65,536-color TFT (QVGA 320 x 240 pixels)

Analog

16MB (Application), SRAM128KB (Backup for HMI)

8MB (Application), SRAM128KB (Backup for HMI)

x1 (IEEE802.3i / IEEE802.3u, 10BASE-T/100BASE-TX)

No

RS-232C×1, RS-422/485×1

x1

No

USB Type-A (2.0) x 1, USB mini-B (2.0) x 1

Yes

No (Rechargeable battery)

No

Coated model: Yes / Color variation: Yes

For detailed specifications, visit our website.

<http://www.pro-face.com/product/hmi/gp4000/spec.html>



Lineup

Modular Type Compact Type	5.7" DC 24V	3.5" DC 24V	3.4" DC 24V
	GP-4301TM Modular Type	GP-4201TM Modular Type	GP-4100 Compact Type
	 Color variation 	 Color variation 	  Color variation 


Display (Resolution)	65,536-color TFT (QVGA 320 x 240 pixels)	Monochrome LCD (200 x 80 pixels)
Touch Panel Type	Analog	
Memory	8MB(Application),nvSRAM128KB(Non-volatile,No Battery Needed)	2.2MB(Application),EPROM128KB*1 (Backup for HMI)
Ethernet	×1 (IEEE802.3i / IEEE802.3u, 10BASE-T/100BASE-TX)	×1 (IEEE802.3u, 10BASE-T/100BASE-TX)*2
SIO	RS-232C/422/485×1	RS-232C/422/485×1*3
SD Card Slot	No	
USB	USB Type-A (2.0) ×1, USB mini-B (2.0) ×1	
Replaceable Battery	No	
Alarm Analysis DB Function	No	
Other models	No	

*1: For supported features, please refer to GP-Pro EX Reference Manual. *2: GP-4104 only *3: Excluding GP-4104

Modular Type HMI with Easy Installation

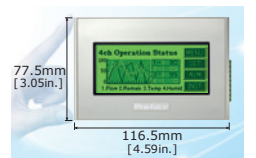
GP4000M Series

A separate installation cable is under development.



Compact HMI with Full-graphic Display

GP4100 Series



The Perfect Visualization Solution for every need.

Rear-mounting HMI, Integrates into Machine Design

GP4000 Series Rear-mount Model



Size	12.1"	10.4"	7.5"	5.7"
------	-------	-------	------	------

GP4000 Series Rear-mount Models are DC power and analog touch panel models only.

Corrosion-resistant Board Coating for Environmental Requirement

All GP4000 Series products are available in coated models. (Except GP4100 Series and GP4000M Series)

Compatibility with Equipment Design or Customer Corporate Brand

GP4000 Series Color Variation



Silver PANTONE 8401C

Off-white PANTONE Cool Gray 1C

Beige PANTONE 7535C

Black PANTONE 432C

For detailed specifications, visit our website.

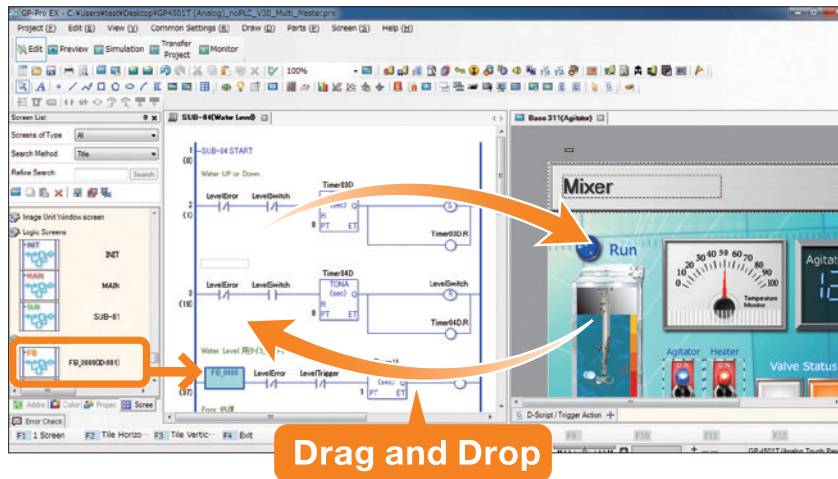
<http://www.pro-face.com/product/hmi/gp4000/spec.html>



Efficient Program Development with Direct Link between HMI and Control

Easy sharing of symbolized device data between HMI screen and control programs using drag and drop operation provides you with intuitive operation throughout the successful completion of a project.

Function Block control programming also eases your control system design with frequently used and specially defined control functions.



GP-Pro EX Ver. 3.1 New Features

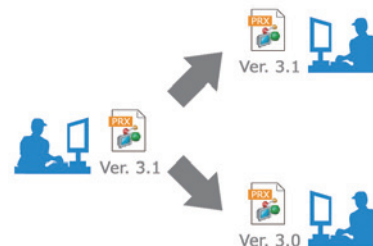
Quickly understand detailed differences between similar project files

Project Comparison Tool allows easy yet detailed comparison of two screen-project files for updating and modifying customer applications. Differences for each part attribute, alarm message, or setup item are displayed.

Screen B1	A	B
Parts 1	Address X0001	X0002
	Shape Circle	Square
	Action Momentary	Alternate
	Label Run	Run
	...	

Multi-version File Format Support for Screen Project Files

Screen project files edited in version 3.1 of GP-Pro EX can also be saved in version 3.0 format to facilitate screen data handling among personnel with different responsibilities such as testing engineers, factory installation technicians, and maintenance engineers.



More New Features

- Change password during on-line operation
- Extended text search and replacement
- Range Setting on Word Switch
- Selectable SRAM Back-up Data Modes for Screen Data Transfer



Pro-face

for the best interface

We are always striving to bring you the high quality interface designed to provide a cohesive, evolving connection between customers and high quality products, service and support from around the world.

All *i*eyes on the customer make us "the best interface"

*i*ntimacy

Connect intimately with our customers and stakeholders

*i*nteraction

Enhance customer experience through positive interaction

*i*nnovation

Provide benefits to our customers through innovation

⚠ WARNING

HAZARD OF OPERATOR INJURY, OR UNINTENDED EQUIPMENT DAMAGE

Before operating any of these products, be sure to read all related manuals thoroughly.

Failure to follow these instructions can result in death, serious injury or unintended equipment damage.

- For printing purposes, the colors in this catalog may differ from those of the actual unit.
- Actual user screens may differ from the screens shown here.
- Electric equipment should be installed, operated, serviced, and maintained only by qualified personnel. No responsibility is assumed by Digital for any consequences arising out of the use of this material.
- All product names used in this catalog are the registered trademarks or trademarks of their respective companies.
- All information contained in this catalog is subject to change without notice.

KLINKMANN

Riga
tel. +371 6738 1617
klinkmann@klinkmann.lv

Helsinki
tel. +358 9 540 4940
automation@klinkmann.fi

Yekaterinburg
tel. +7 343 287 19 19
yekaterinburg@klinkmann.spb.ru

Vilnius
tel. +370 5 215 1646
post@klinkmann.lt

St. Petersburg
tel. +7 812 327 3752
klinkmann@klinkmann.spb.ru

Samara
tel. +7 846 273 95 85
samara@klinkmann.spb.ru

Tallinn
tel. +372 668 4500
klinkmann.est@klinkmann.ee

Moscow
tel. +7 495 641 1616
moscow@klinkmann.spb.ru

Kiev
tel. +38 044 495 33 40
klinkmann@klinkmann.kiev.ua

Minsk
tel. +375 17 200 0876
minsk@klinkmann.com