

BGS5 Terminal



Quad Band 2G
GPRS Class 12



Java embedded



Flexible
Mounting



FOTA configurable
& royalty-free



USB 2.0
High Speed
compatible



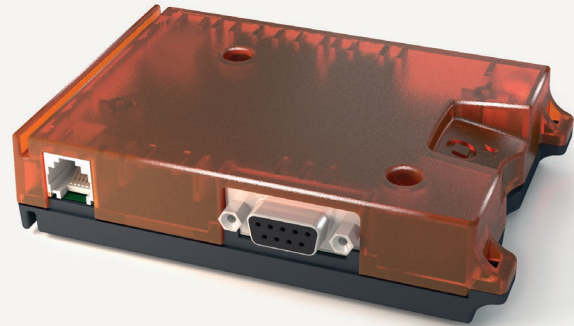
Advanced
Temperature
Management



Embedded
TCP/IP Stack



RLS Monitoring
(Jamming
Detection)



TERMINALS

Cinterion® BGS5 Terminal

2G Smart M2M Gateway powered by Java™

Cinterion® BGS5 Terminal

2G Smart M2M Gateway powered by Java

Gemalto's new Cinterion 2G Smart Terminal takes M2M simplicity to a whole new level. Leveraging Gemalto's next-generation Java embedded technology, the plug-and-play BGS5T solution powered by a quad-band GPRS base-band enables cost optimized, secure wireless TCP/IP connectivity anywhere in the world for a variety of industrial applications such as metering, remote monitoring, transportation, security and many more.

The Cinterion gateway provides universal industrial interfaces e.g. USB or RS232 and is encased in a compact, rugged housing with an integrated SIM cardholder and unprecedented mounting options. It provides first-time M2M developers

and small-scale implementers with a flexible, cost effective solution to quickly launch enterprise optimization solutions that expand the Internet of Things.

Optional features include an embedded component SIM - the Cinterion Machine Identification Module (MIM) and the cloud based SensorLogic application enablement platform that enables out-of-the-box M2M communication reducing integration complexity and Total Cost of Ownership. Like all Cinterion products, the smart 2G terminal comes with full type approval (FTA) and is certified by the largest carriers worldwide.

Plug-and-Play with Most Flexible Mounting



Plug & Play

BGS5 Terminal is a simple and reliable plug-and-play communication device that allows new M2M implementers to quickly connect their industrial applications using wireless technology. With very little integration and approval efforts, it provides a cost effective, swift solution for enterprise optimization technology.

Embedded Java™

Java offers easy and fast application development, a broad choice of tools, high code reusability, easy maintenance, a proven security concept, on-device debugging as well as multi-threading programming and program execution.

Highly Flexible Mounting Concept

Encased in robust plastic housing, the miniaturized terminal works in virtually any application providing secure 24-7 connectivity. For quick and easy implementation, the terminal is compatible with a variety of mounting schemes including:

- > DIN rail mounting
- > Screw fixing
- > C-rail mounting
- > The use of cable ties

Gemalto M2M Support includes:

- > Personal design-in consulting for hardware and software
- > Extensive RF test capabilities
- > GCF/PTCRB conform pretests to validate approval readiness
- > Regular training workshops



Local engineers, a competent helpdesk, a dedicated team of R&D specialists and an advanced development center are the hallmarks of our leading support offer.

Cinterion® BGS5 Terminal Features

GENERAL FEATURES

- > Quad-Band GSM
Bands: 850, 900, 1800 and 1900 MHz
3GPP Release 6
- > GPRS multi-slot Class 12
- > Compliant to GSM phase 2/2+
- > Output power
Class 4 (2W) for GSM 850 and GSM 900
Class 1 (1W) for GSM 1800 and GSM 1900
- > SIM Application Toolkit, class 3
- > Control via standardized and extended AT commands (Hayes, TS 27.007 and 27.005)
- > TCP/IP stack access via AT command and transparent TCP services
- > Secure Connection for client IP services
- > Internet Services TCP/UDP server/client, DNS, Ping, FTP client, HTTP client
- > Supply voltage range 8 – 30 V
- > Dimension: 115 x 86 x 26 mm (incl. connectors)
- > Weight: approx 130g
- > Operating Temperature: -30 °C to +65 °C

SPECIFICATIONS

- > GPRS Class 12 data rates
DL: max. 85.6 kbps, UL: max. 85.6 kbps, Mobile Station Class B
- > CSD data transmission up to 9.6 kbps, V.110, non-transparent
- > USSD support
- > SMS text and PDU mode support

SPECIAL FEATURES

- > USB interface supports multiple composite modes and a Linux-/Mac- compliant mode
- > Firmware update via USB and serial interface
- > Real time clock with alarm functionality
- > Multiplexer according 3GPP TS 27.010
- > RLS Monitoring (Jamming detection)
- > Informal Network Scan
- > Programmable hardware watchdog
- > Flexible mounting concept
- > Integrated FOTA, configurable and royalty free
- > Embedded SIM as an option (MIM)

JAVA OPEN PLATFORM

- > Java™ ME 3.2
- > Secure data transmission with HTTPS/SSL
- > Multi-Threading programming and
- > Multi-Application execution
- > 5 MB RAM and 10 MB Flash File System

INTERFACES

- > Antenna Connector SMA (female) for GSM/WCDMA
- > 20 pin header (Weidmüller) with GPIO's, power, I²C
- > Mini SIM card reader, 1,8V and 3,0V
- > Embedded SIM as an option (MIM)
- > 2 operating status LED's
- > 4-wire high speed serial interfaces ASC1
- > USB (B) 2.0 HS interface
- > Plug-in power supply connector (6-pole Western jack)
- > V.24/ V.28 RS-232 interface, up to 920kbps, auto-bauding (D-sub 9-pole female socket)

DRIVERS

- > USB, MUX driver for Microsoft® Windows XP™, Vista™ and 7™
- > RIL, USB driver for Microsoft® Windows Embedded Handheld™ >= 6.x
- > MUX driver for Microsoft® Windows XP™, Vista™ and 7™

APPROVALS

- > R&TTE, GCF, CE, FCC*, PTCRB*, IC*, UL
- > Other local approvals and provider Certifications *
- > WEEE, EuP, RoHS and REACH compliant

For more information, please visit

m2m.gemalto.com, www.facebook.com/gemalto, or Follow @gemaltom2m on twitter.

The information provided in this brochure contains merely general descriptions or characteristics of performance, which in case of actual use do not always apply as described or which may change as a result of further development of the products. An obligation to provide the respective characteristics shall only exist if expressly agreed in the terms of contract. All product designations may be trademarks or product names of Gemalto M2M GmbH or supplier companies whose use by third parties for their own purposes could violate the rights of the owners. Oracle and Java are registered trademarks of Oracle and/or its affiliates. Other names may be trademarks of their respective owners. ARM9 is a registered trademark of ARM Limited.

© Gemalto 2014. All rights reserved. Gemalto, the Gemalto logo, are trademarks and service marks of Gemalto and are registered in certain countries. February 2014

Gemalto M2M GmbH
St.-Martin-Str. 60
81541 Munich
Germany



➔ M2M.GEMALTO.COM



www.klinkmann.com

HELSINKI

tel. +358 9 540 4940
info@klinkmann.fi

ST. PETERSBURG

tel. +7 812 327 3752
klinkmann@klinkmann.spb.ru

MOSCOW

tel. +7 495 641 1616
moscow@klinkmann.spb.ru

YEKATERINBURG

tel. +7 343 287 19 19
yekaterinburg@klinkmann.spb.ru

SAMARA

tel. +7 846 273 95 85
samara@klinkmann.spb.ru

UFA

tel. +7 347 293 70 04
klinkmann@klinkmann.ru

KIEV

tel. +38 044 495 33 40
klinkmann@klinkmann.kiev.ua

KAZAKHSTAN

tel. +77779994825
sales@klinkmann.kz

MINSK

tel. +375 17 200 0876
minsk@klinkmann.com

RIGA

tel. +371 6738 1617
klinkmann@klinkmann.lv

VILNIUS

tel. +370 5 215 1646
post@klinkmann.lt

TALLINN

tel. +372 668 4500
klinkmann.est@klinkmann.ee