

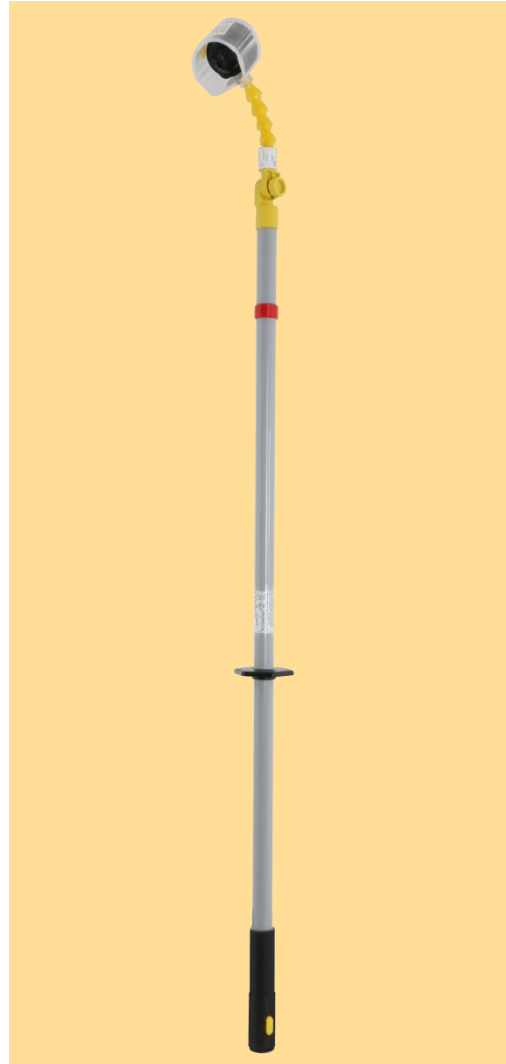
# DEHN DIGIK - Wireless inspection camera

## Inspection camera for installations up to 36 kV

**finn electric**  
www.finnelectric.fi



Facilitates work



Brings the invisible to light



Increases Safety

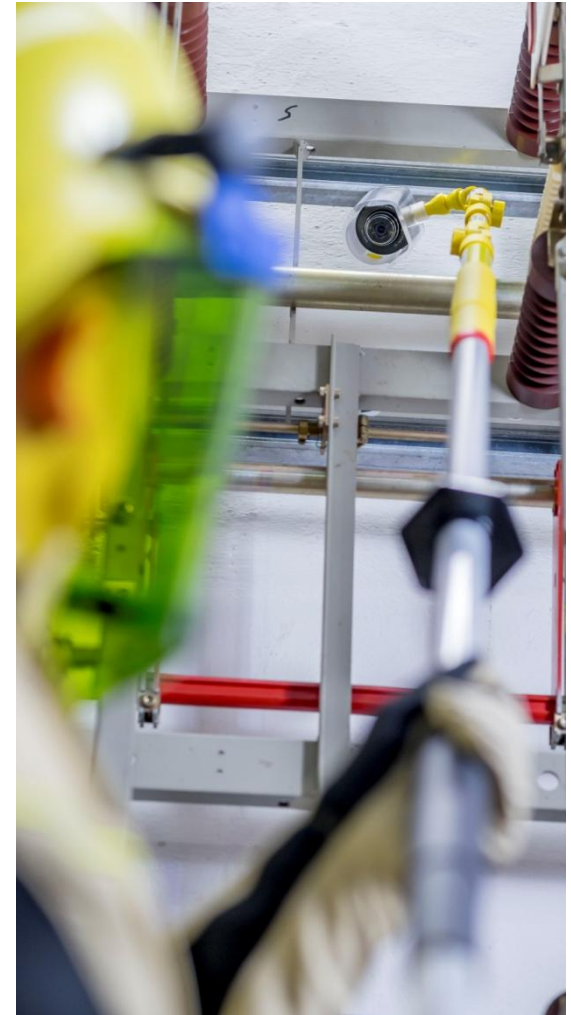


Saves time

# Wireless inspection camera

## Product description

- Camera for visual inspection and documentation of the state of electrical installations up to 36 kV/15–60 Hz
  - Once a **photo** has been taken, it is transferred to the mobile device via the Wi-Fi connection where it can be processed
  - **Films** are directly stored on the (optional) micro SD card which must be inserted into the camera
- Housing is protected against bridging
- Hot stick working on live parts



# Wireless inspection camera

## Check for excessive pollution



# Wireless inspection camera

## Difficult to read rating plate in the danger zone





# Wireless inspection camera

## Checking the rear side of an insulator



# Wireless inspection camera

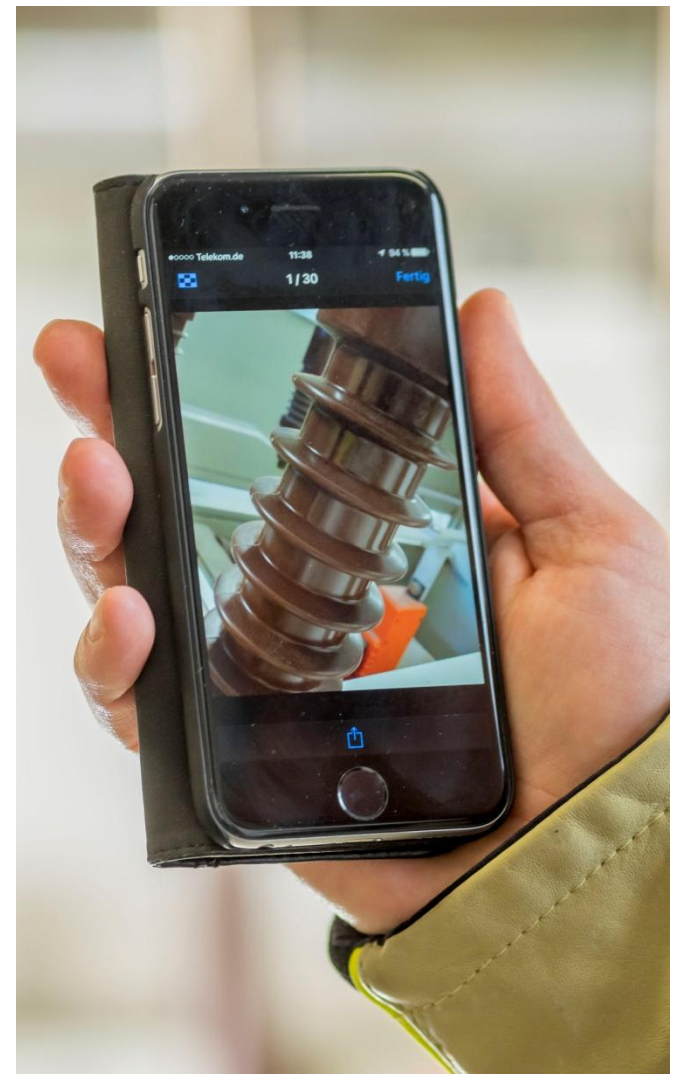
## Finding a forgotten tool in the installation





# Wireless inspection camera

## Check for breakage and pollution



# Wireless inspection camera

## Documentation of the rating plate 20 kV





# Wireless inspection camera



## Digital camera set

Part No. 766 390

- 1 Plastic case with foam cutouts; dimensions: 395 x 290 x 105 mm
- 2 Adapter with gear coupling
- 3 Camera housing
- 4 Camera
- 5 Sony instruction manual
- 6 Micro-USB cable